



# UP NORTH PROPERTIES

MARKETING TEAM

**Edina Realty** Inc.

BRAINERD LAKES AREA

CALL US TOLL FREE:  
1-888-251-SELL (7355)

E-MAIL US DIRECTLY:  
sales@upnorthproperties.com



View all the lakes area properties and daily new listings on:

[www.upnorthproperties.com](http://www.upnorthproperties.com)

Linked to the Minneapolis/  
St. Paul MLS, we make every  
effort to ensure that your  
property is well-represented.  
We invite you to call us for a  
complimentary market analysis.

Up north living,  
catch the fever . . .



**Bill Grunewald**  
BROKER / REALTOR®  
ABR / GRI

**Joan Grunewald**  
REALTOR® / ABR

**Dan Roach**  
REALTOR®

**Candy Hart**  
BROKER / REALTOR®

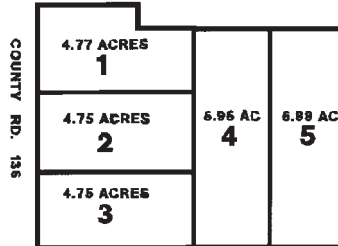
**Jeff Bittner**  
REALTOR®

**Andy Levesque**  
REALTOR®



**GULL CHAIN  
MARGARET LAKE  
ACCESS** — Beautiful  
wooded building site, convenient  
location, part of a 4 lot association  
with Margaret Lake access.  
**\$89,900 MLS #143032**

## UTOPIA ACRES



**UTOPIA ACRES**  
— Beautiful wooded lots with  
privacy in the Fifty Lakes area  
only 10 minutes to Crosslake.  
The public access to Eagle Lake  
is across the road and Mitchell  
Lake is only  
1 mile. Close to Land O Lakes  
State Forest and thousands of  
acres of state and county land..  
**\$49,900-59,900**  
**MLS#144551-144555**



**160 ACRES  
PRIME HUNTING  
LAND** — consisting of  
4, 40 acre parcels. Great  
hunting retreat. Property has  
areas of mature aspen mixed  
with tamarack and oak. Seller  
reports \$20,000 plus Aspen to  
harvest. Includes older mobile  
home. **\$169,900**  
**MLS#135222**

**COMMERCIAL LOTS IN FIFTY LAKES** — There are three lots to  
choose from and are all contiguous with each other. Driveway approaches are in, and each lot is  
approximately one acre with highway frontage of approximately 190'. Lots are wooded. Great  
investment opportunity. **\$29,900; \$19,900; \$19,900 MLS#s 133384, 133385,  
1333873**

## LOTS —

**MLS#134475** 1 acre wooded lot on edge of Crosby private in town living. **\$19,900**