

CALL CURT FOR A "FREE" MARKET ANALYSIS!



CLASSIC CHARACTER AND CHARM IN NORTH BRAINERD

MLS#141298 This home has it, FP in LR, breakfast nook, & formal dining area, 4BRs, & 2 1/2 BAs. Full unfin. bsmt. Great landscaping & corner lot. Tranquil outdoor garden room. \$2,000 kit. allowance. A must see! **\$174,900**



UNIQUE OPPORTUNITY ON GULL CHAIN

MLS#141486 Tranquility comes w/this 3BR, 2BA WO only 1.5 mi. from downtown Nisswa. Flowering fruit trees & established perennials make this a lovely setting. Dock sits on your own private harbor nestled between Roy & Nisswa Lake. Room for add'n or guest cabin. Dbl. gar. w/extra storage has room for all your toys to make this your first lake home, or Up North getaway. Nature trail runs throughout wooded acres. Newer septic, well, & roof **\$309,900**



VIEW - T - FULL!

MLS#142925 Clean 1-story w/full WO bsmt. 17 ft. of gradual elevation, sandy shoreline. 26x26 gar. Dock & boat lift included. Cement steps to lake, patio & lake side covered deck. CA. New pontoon also avail. This is a great mix of quality. Lakeshore w/5BR 3BA year round home. Great sunsets! **\$349,900**



EXCITINGLY NEW!

MLS#144708 Exceptional quality-new construction, grand entrance includes cement drive, ceramic tile & real HW floors. Roomy master suite w/whirlpool tub & ceramic shower. 400+ SF cedar deck, French doors on third BR/den. Lots of custom features make this property a pleasure to view. **\$265,000**



FIVE PRIVATE ACRES

MLS#143354 Quality built newer home - 4BR, 2BA, lots of heated ceramic tile. Awesome vaulted & common areas- very open. Heated gar. floor, CA, rustic birch cabinets with stainless steel appliances, very well done & a pleasure to show! Lot split. **\$229,900**



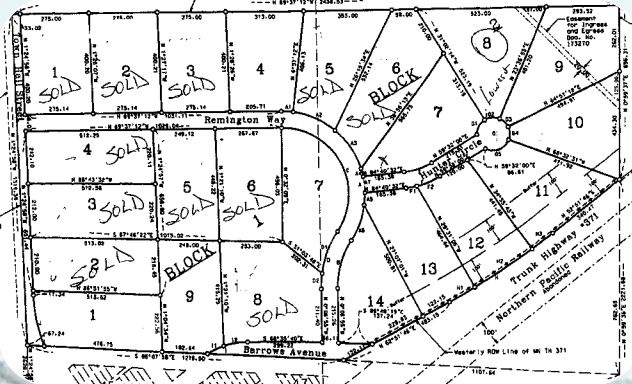
WATERFRONT COMPOUND!

MLS#143239 Updated WO w/over 700 ft of shoreline & 10 ac. of privacy. 30x50 pole building, new ceramic tile, stainless kit. appliances. Some furnishings, include: 70" Sony flat screen theater w/4 chairs, roll-top desk, some log furniture & more. This is a property your buyer will want to see, a lot to offer. **\$349,000**



LIVE AT THE LAKE!

MLS#141304 Cedar sided lake home w/a great sand beach. 2.5 ac. w/250' on water make this a rare find. Formal dining w/vaulted T&G ceiling. CA on end of cul-de-sac road for privacy. Dock included. **\$449,900**



Build your new home on one of these affordable 2.5 acre lots. Just 3 miles south of Brainerd - prices vary from **\$37,900 - \$39,900**. 11 lots available to choose from.



BE THE FIRST TO LIVE IN THIS ONE!

MLS#144763 Quality built home on 2.6 ac. 3BR, 2BA, great vault in common areas, master suite, FP, ceramic. Hurry & pick out some colors. Large porch around 2 sides of home. **\$209,900**



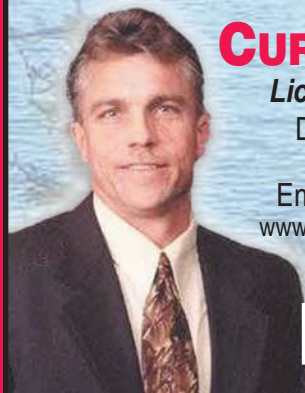
CAPE COD/ 5 ACRES

MLS#145592 Quality and character describe this 3 bedroom, 3 bath home just 2 miles east of Brainerd. Extra 30X30 garage, 20X32 horse barn. Totally applianced with hardwood floors. Come take a look. **\$289,900**
Adjacent 5 acres also available.



FIND YOURSELF BY THE LAKE!

MLS#140620 100' of easy elevation to nice shoreline. Electric in for RV. Hard to find quality building site. **\$139,900**



CURT CHRISTENSEN

Licensed Realtor/Appraiser

Direct (218) 825-3611

Cell (218) 839-1530

Email: curtchr@brainerd.net

www.curtchristensen.edinarealty.com



www.edinarealty.com

